

Optional Accessories

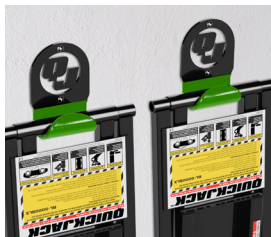
SUV & Light Truck Adapter Kit

- (4) Contact pads
- (4) Sliding receivers
- (4) 3" Stackable adapters



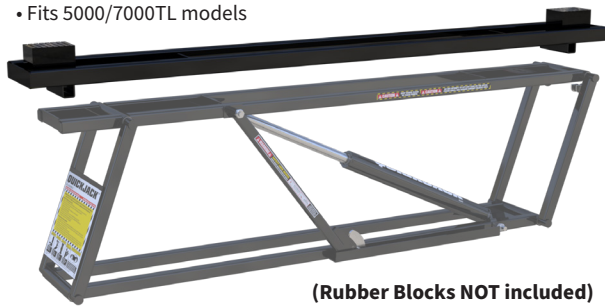
Wall Hanger Set

- Sold in sets of two
- Solid-steel construction
- 150% rated capacity



Frame Extension Kit

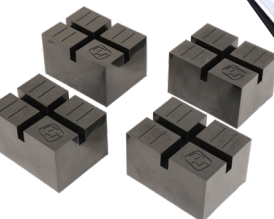
- (2) Frame extension adapters with 66" lift point spread each
- Rugged 14-gauge steel construction
- Fits 5000/7000TL models



(Rubber Blocks NOT included)

ATV / Motorcycle Lift Adapter Kit

- Aluminum diamond tread plate
- Heavy-duty tie-down rings
- Adjustable wheel clamp



Pinch-Weld Blocks

- Sold in sets of 4
- Specially formulated urethane rubber
- Water/Chemical resistant and 100% weatherproof



Pinch-Weld Pucks

- Sold in sets of 4
- Specially formulated urethane rubber
- Round puck pad secures difficult pinch-weld rails without risk of damage



Crossbeam Adapter

- Adjustable lifting pads
- Additional 4.75" clearance height
- Comes with custom contact pads



NEW & IMPROVED

The Ultimate Portable Car Lift



The QuickJack portable lifting system makes vehicle maintenance on and off the track convenient and lightning fast. The QuickJack can go anywhere and is easily stowed in the trunk or back seat of most cars. Bring it to the track, or drop it on your garage floor to perform routine maintenance in the comfort of your home, all in seconds.

Call 1-888-262-3880 or visit www.quickjack.com



QUICKJACK™

3500SLX Light-Duty



3,500 lb.
Capacity

5000TL Most Popular Model



5,000 lb.
Capacity

7000TL Ideal for Truck & SUVs



7,000 lb.
Capacity

6000ELX Extra-Long Wheelbases



6,000 lb.
Capacity

5000TLX Extended Frame Length



5,000 lb.
Capacity

7000TLX Extended Frame Length



7,000 lb.
Capacity

Truck Adapters NOT Included

SPECIFICATIONS

	3500SLX	5000TL	5000TLX	7000TL	7000TLX	6000ELX
Lifting Capacity	3,500 lbs. (1,588 kg)	5,000 lbs. (2,268 kg)	5,000 lbs. (2,268 kg)	7,000 lbs. (3,175 kg)	7,000 lbs. (3,175 kg)	6,000 lbs. (2,722 kg)
Lowered Height	3" (76 mm)	3" (76 mm)	3" (76 mm)	3.5" (89 mm)	3.5" (89 mm)	3.5" (89 mm)
Lifting Height (frame only)	17.5" (445 mm)	17.5" (445 mm)	17.5" (445 mm)	18" (457 mm)	18" (457 mm)	18" (457 mm)
Lifting Height (stacked blocks)	24.5" (533 mm)	24.5" (533 mm)	24.5" (533 mm)	24.5" (540 mm)	24.5" (540 mm)	24.5" (540 mm)
Lift Point Spread (min.)	37" (800 mm)	37" (800 mm)	43" (953 mm)	37" (800 mm)	43" (953 mm)	53" (1,207 mm)
Lift Point Spread (max.)	60" (1,524 mm)	60" (1,524 mm)	66" (1,676 mm)	60" (1,524 mm)	66" (1,676 mm)	76" (1,930 mm)
Frame Width	11" (278 mm)	11" (278 mm)	11" (278 mm)	12.5" (318 mm)	12.5" (318 mm)	12.5" (318 mm)
Frame Length	70" (1,778 mm)	70" (1,778 mm)	76" (1,940 mm)	70.75" (1,778 mm)	76.75" (1,940 mm)	86.5" (2,197 mm)
Frame Weight	76 lbs. (35 kg)	76 lbs. (35 kg)	80 lbs. (36 kg)	96 lbs. (44 kg)	101 lbs. (46 kg)	110 lbs. (50 kg)